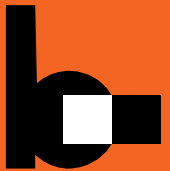


# Orange County Public Schools



**WINNER**

the broad prize  
for urban education



Site 131-PS8-SW-5  
100% Design/ Construction Kick-Off Community Meeting  
School Board Member District 5 Kathleen "Kat" Gordon  
Nov 18, 2015

Superintendent Barbara Jenkins

Chief Facilities Officer John Morris

## Site 131-PS8-SW-5

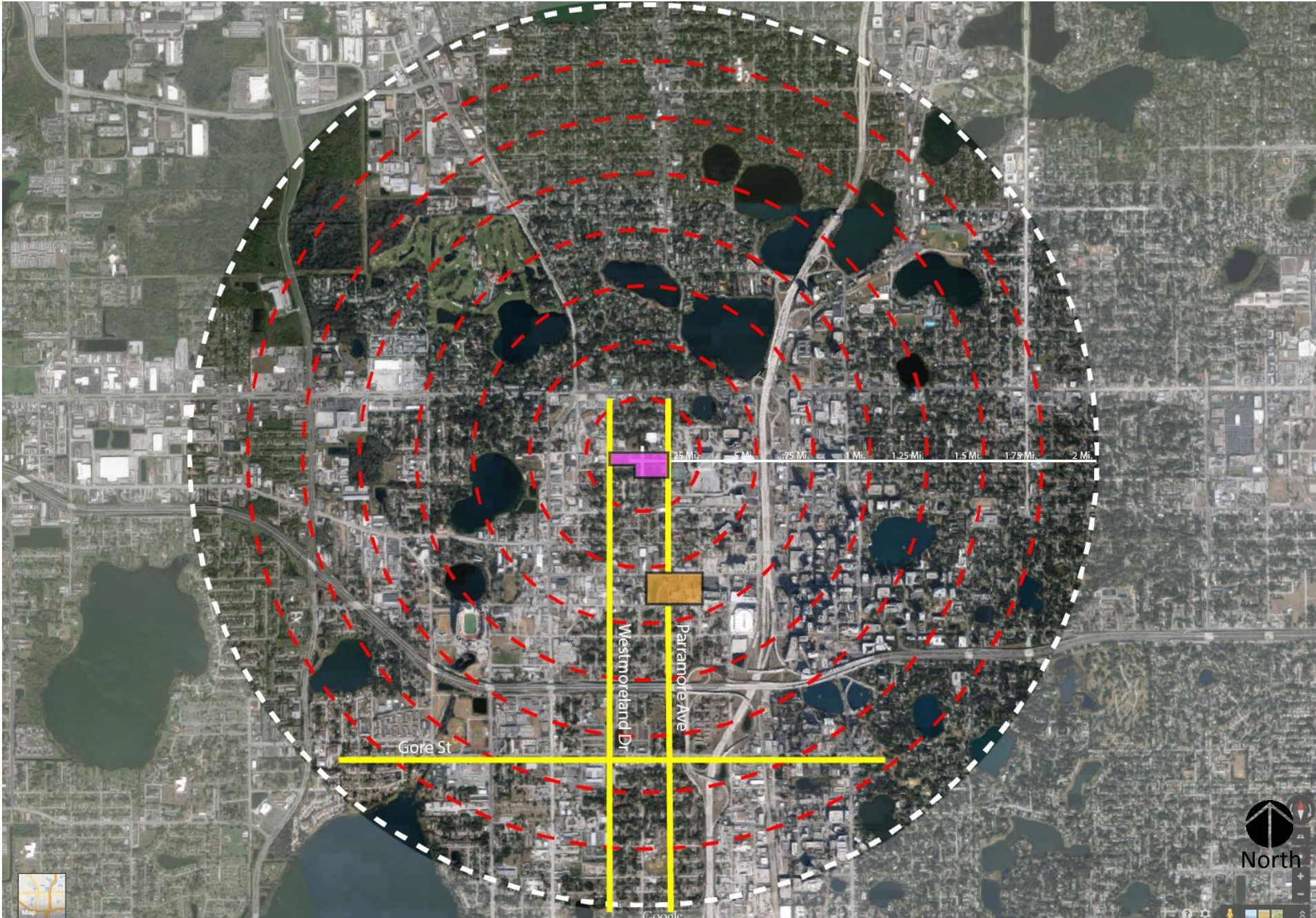
### Meeting Agenda

Nov 18, 2015 RBELC 6 pm

- Welcome – Executive Area Director Jennifer Cupid-McCoy
- Introductions – Facilities Construction Planning Director Jessma Lambert
- Project Update – Architect: Baker Barrios Architects / HKS Architects  
CM: Williams Company
- Questions and Answers  
Contact: Jessma Lambert at 407-317-3700
- Adjournment

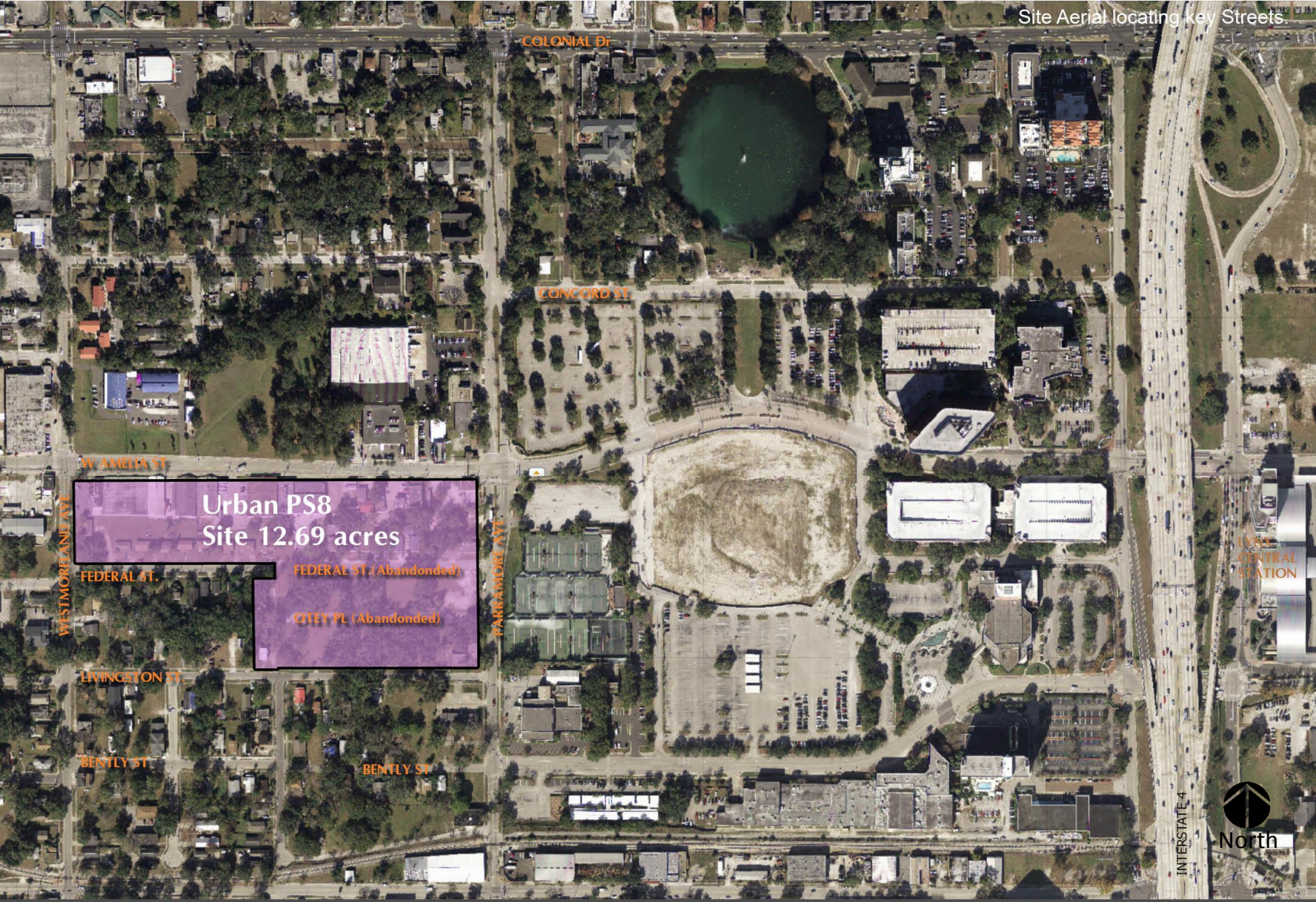


# Orange County Public Schools





# Orange County Public Schools

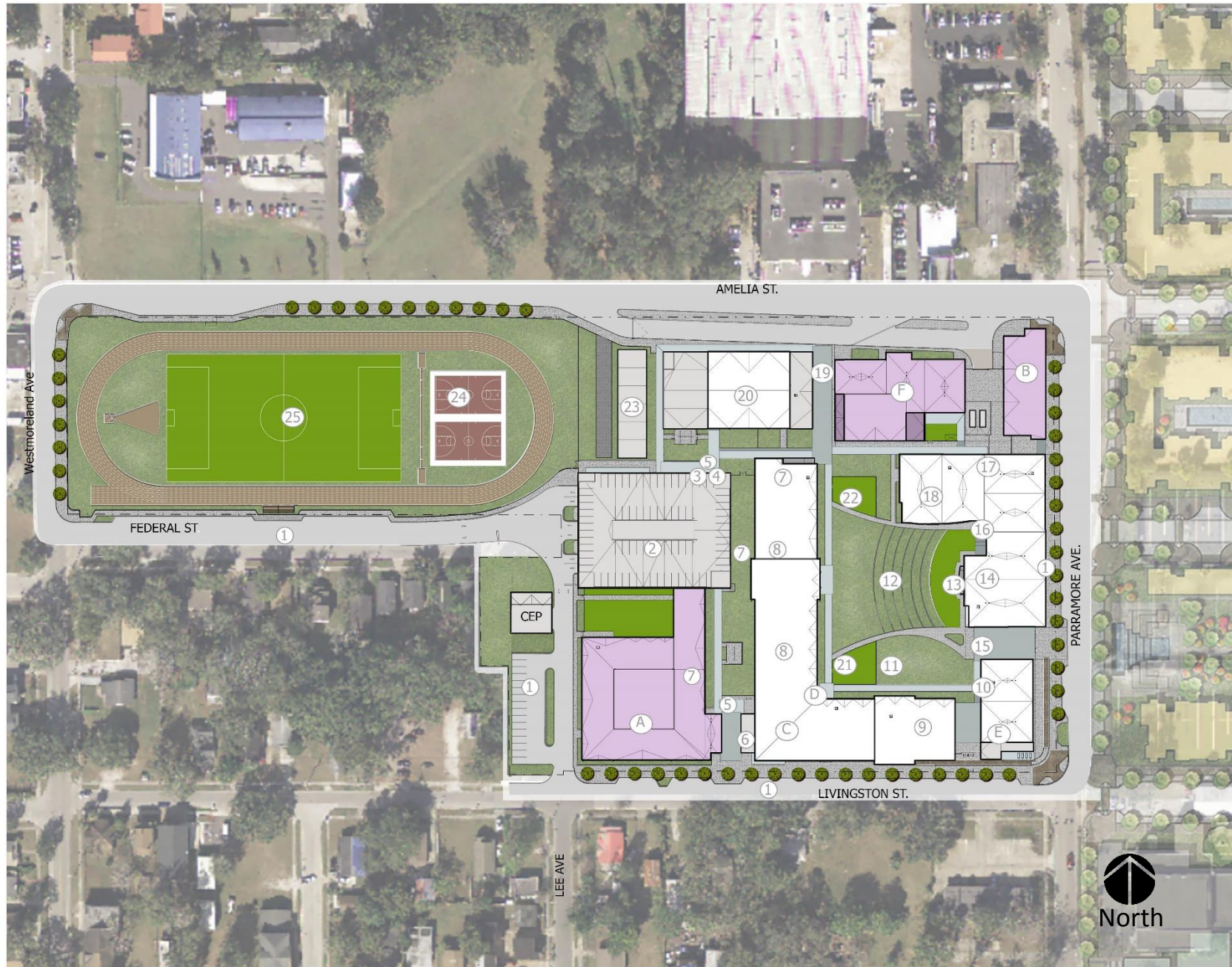




# Orange County Public Schools

## SITE PLAN

- ① Surface Parking
- ② Parking Garage (3 Floors)
- ③ Parent Drop Off
- ④ Covered Loading
- ⑤ Controlled Security Access
- ⑥ Administration (2 Floors)
- ⑦ Student Outdoor Activity Area
- ⑧ Classroom (3 Floors)
- ⑨ Classroom (2 Floors)
- ⑩ Media Center (2 Floors)
- ⑪ Multi-Purpose Courtyard
- ⑫ Amphitheater
- ⑬ Stage (1 Floor)
- ⑭ Dining/Multi Purpose (1 Floor)
- ⑮ Outdoor Dining
- ⑯ Food Service (1 Floor)
- ⑰ Custodial and Central Receiving (1 Floor)
- ⑱ Music/Art (1 Floor)
- ⑲ Bus Loading
- ⑳ Gym (1 Floor)
- ㉑ Tot Lot
- ㉒ Youth Lot
- ㉓ Portables
- ㉔ Basketball Court
- ㉕ Track/Fields
- A Rosen Center (1 Floor)
- B Health Cottage (1 Floor)
- C HUB - UCF/Valencia (1 Floor)
- D Student Outdoor HUB
- E Community Room
- F Boys and Girls Club (2 Floors)





# Orange County Public Schools



**SITE INFORMATION:**  
240 Parking spaces  
54 cars queuing  
6 Bus Stacking







# Orange County Public Schools







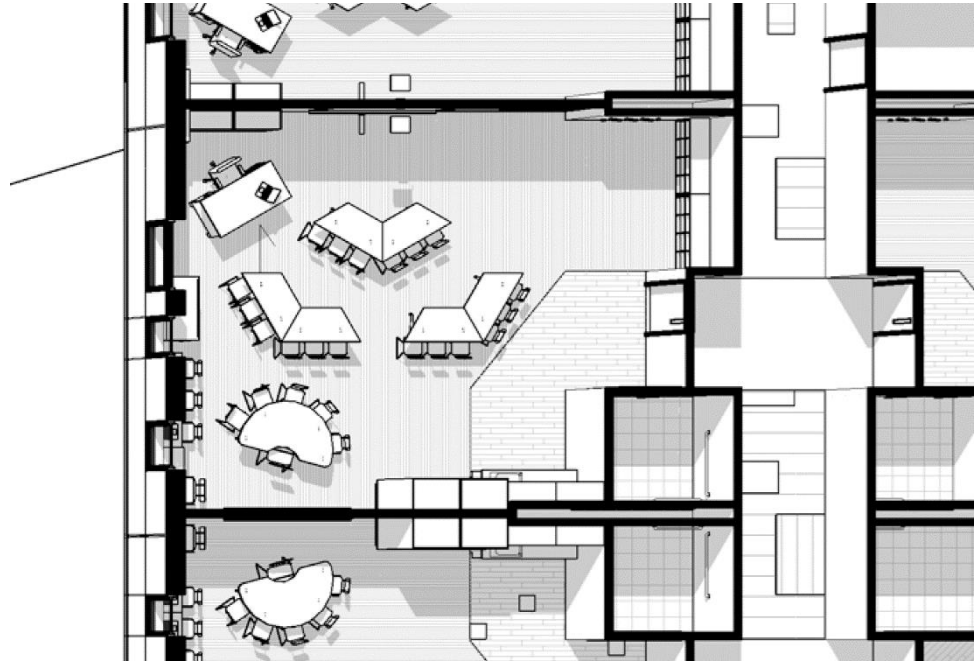


# Orange County Public Schools



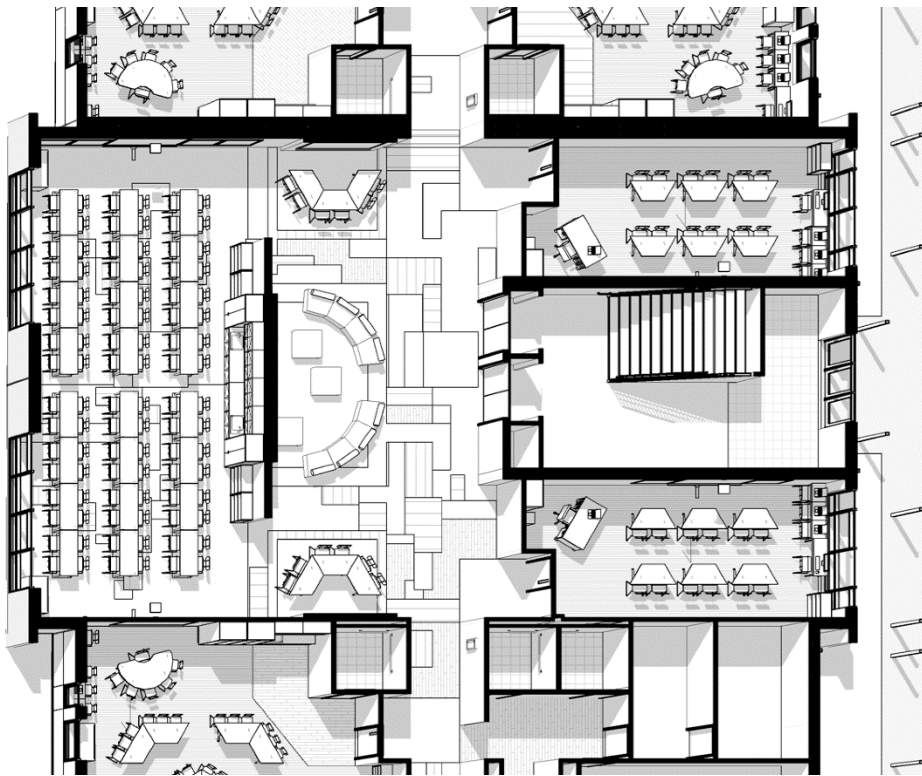


# Orange County Public Schools



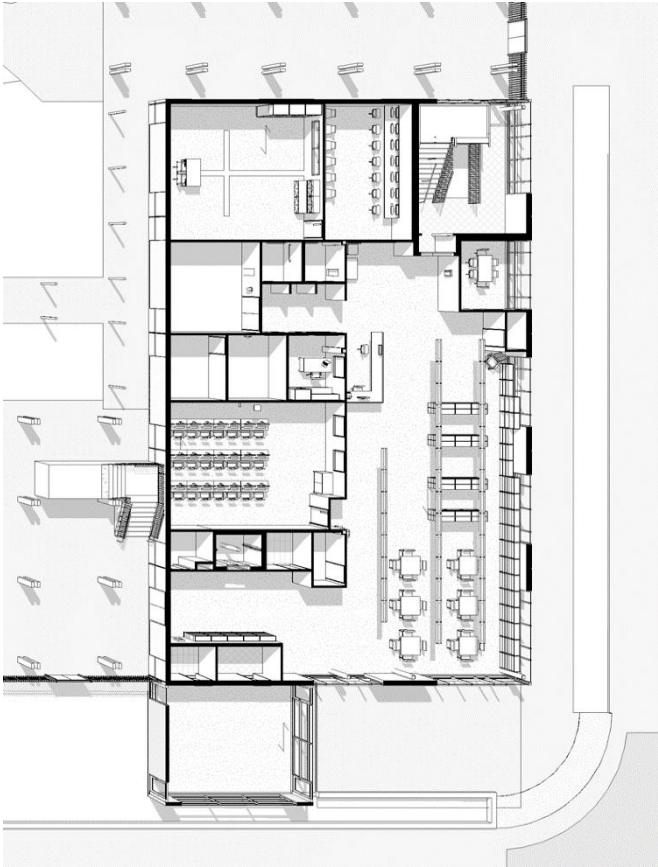


# Orange County Public Schools



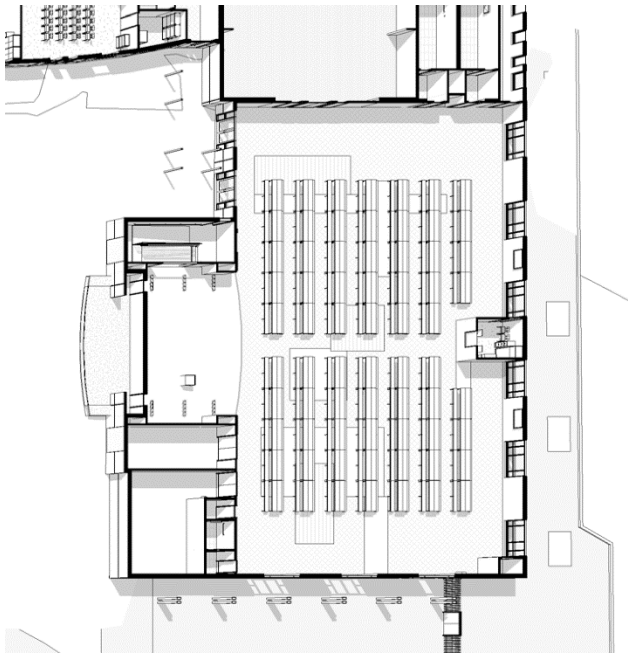


# Orange County Public Schools





# Orange County Public Schools



BLDG 300 A- Floor 1: Cafeteria Example

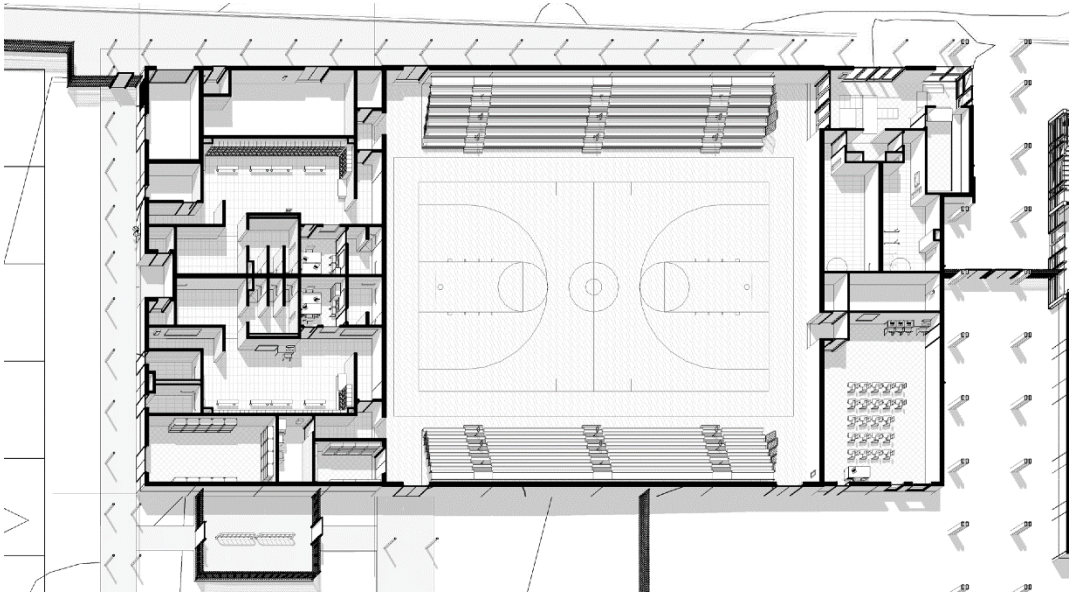


# Orange County Public Schools



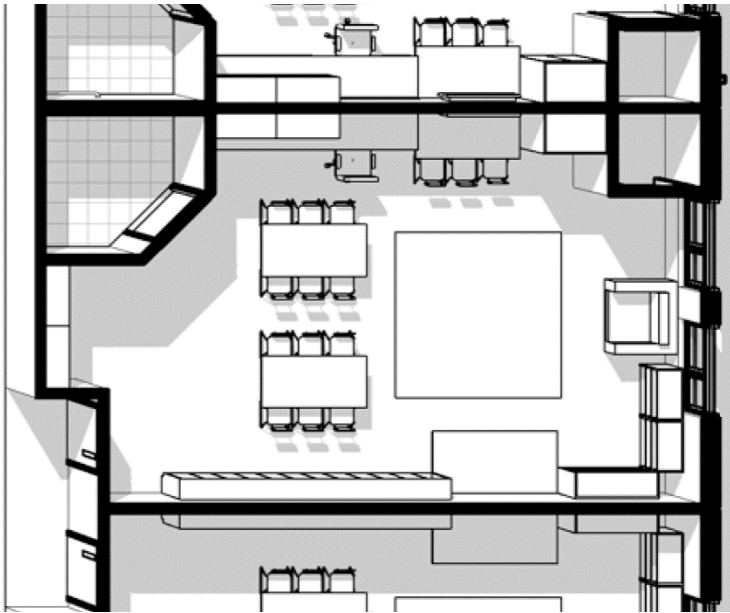


# Orange County Public Schools



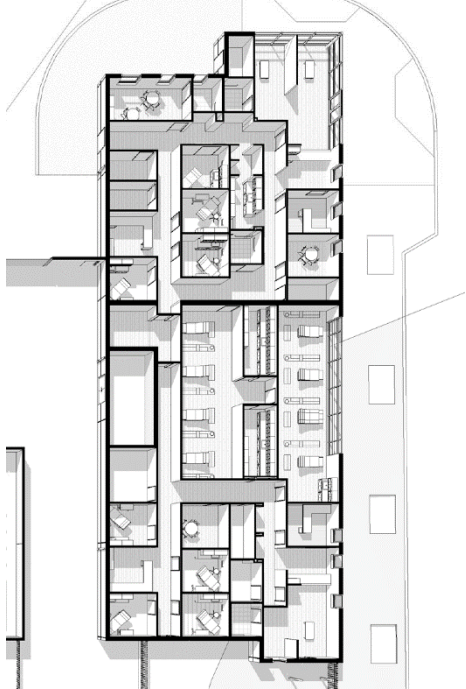


# Orange County Public Schools





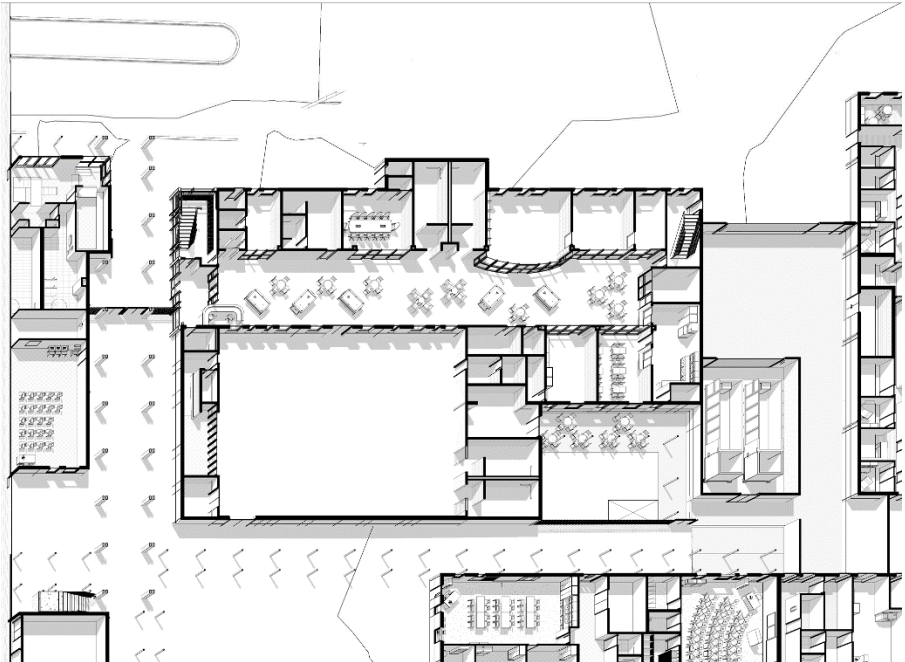
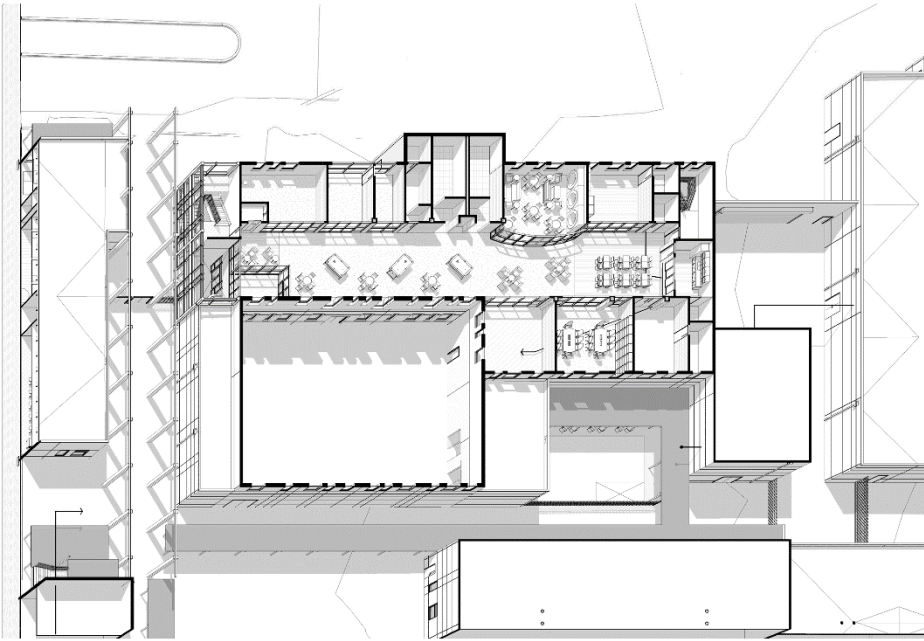
# Orange County Public Schools



Example BLDG 800- Floor 1: Clinic



# Orange County Public Schools



Example BLDG 900- Floor 1-2: Boys & Girls Club



# Orange County Public Schools





## **Benefits of Building Green Schools:**

- Conservation of resources
- Improved student performance
- Improved indoor air quality
- Increased teacher and staff satisfaction and retention
- Increased parental support
- Lower operating costs

**The OCPS Downtown PS-8 is designed to meet the Green Globes sustainable building standards.**

**Sustainable Features of the Downtown PS-8 Project Include:**

## **Site**

- Reduced water use through water monitoring for irrigation system
- Drought tolerant planting

## **Buildings**

- Light colored roof to reduce heat gain and improve energy performance
- Energy Star rated equipment
- Water saving toilets, faucets, and fixtures
- Daylight in all classrooms
- Daylight in over 75% of all spaces
- Thermally efficient windows
- Ozone-friendly HVAC system
- Energy efficient lighting





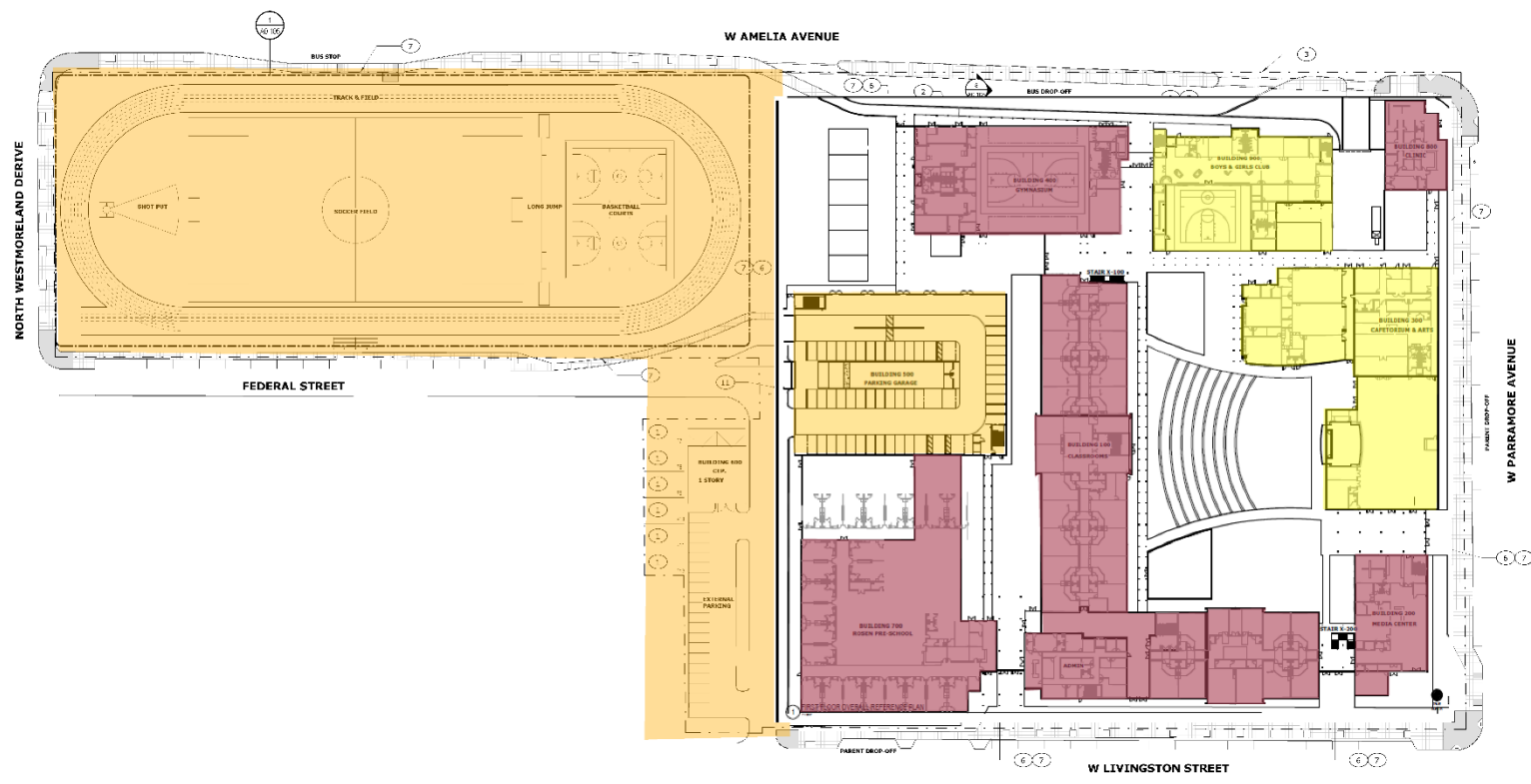


**DECEMBER 2016**

**SITE PREP TRACK AND FIELD**

No.	DESCRIPTION
1	SITE PREP TRACK AND FIELD
2	BUILDING 100
3	BUILDING 101
4	BUILDING 102
5	BUILDING 103
6	BUILDING 104
7	BUILDING 105
8	BUILDING 106
9	BUILDING 107
10	BUILDING 108
11	BUILDING 109
12	BUILDING 110

DATE: 12/15/16  
 DRAWN BY: J. BAKER  
 CHECKED BY: J. BAKER  
 PROJECT: PARAMORE PS-8



1 ARCHITECTURAL SITE PLAN  
 12/15/16



**HKS**  
 HKS INCORPORATED  
 200 EAST HICKORY ST.  
 SUITE 2000  
 ORANGE, CA 92668  
 TEL: 714.952.2000  
 FAX: 714.952.2001

**Baker Barrios**  
 ARCHITECTS  
 1000 WEST GARDEN ST.  
 SUITE 100  
 ANAHEIM, CA 92814  
 TEL: 714.771.1111  
 FAX: 714.771.1112

**PARAMORE PS-8**  
 PROJECT ADDRESS  
 9015 PROJ. No. 131-PS8-SF-5  
 ARCHITECTURAL SITE PLAN

**ORANGE COUNTY PUBLIC SCHOOLS**  
 DESIGN & CONSTRUCTION  
 FACILITIES SERVICES  
 1000 WEST GARDEN ST., SUITE 100, ANAHEIM, CALIFORNIA 92814

**OC PS**

**A0.100**



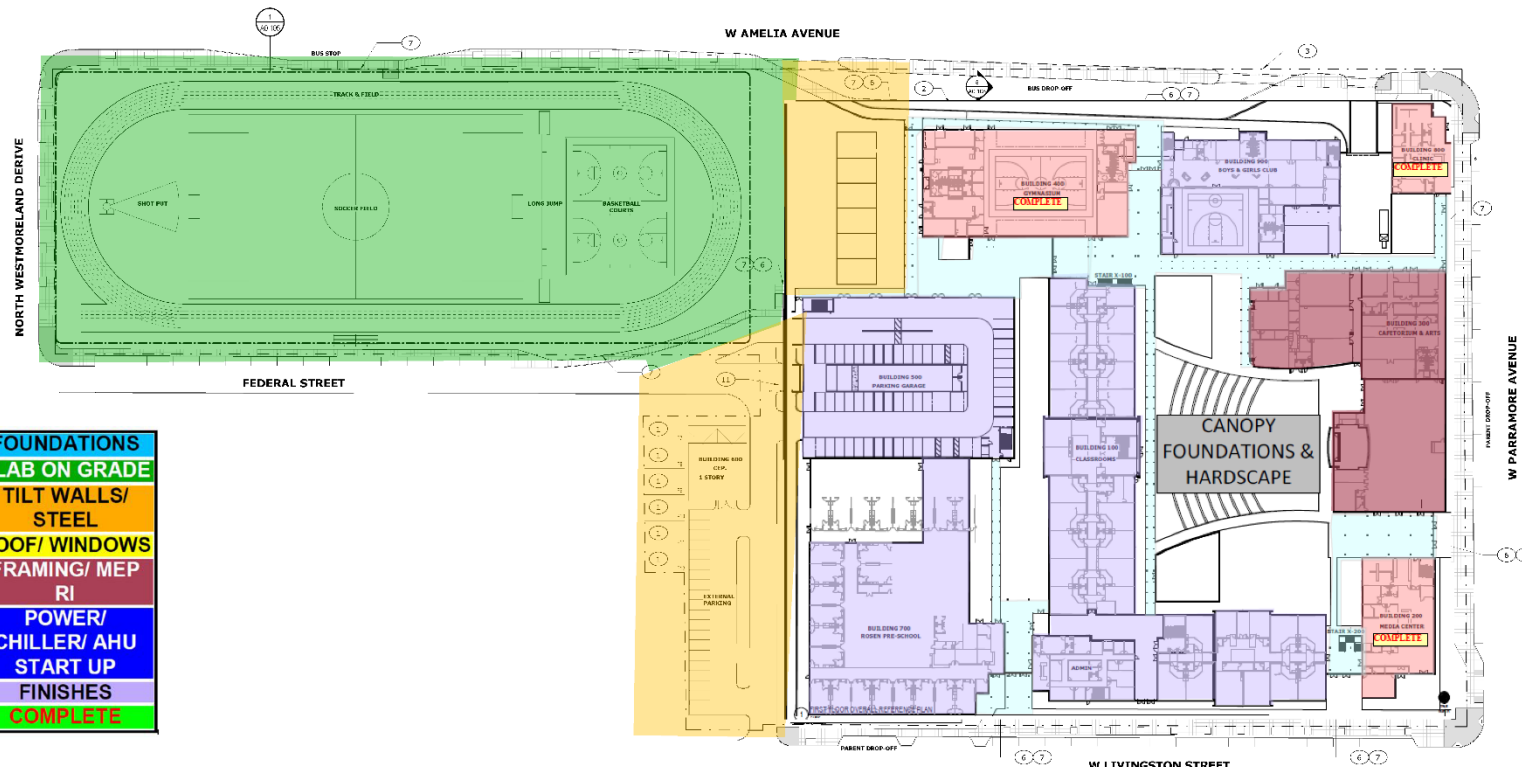
# Orange County Public Schools

**MARCH 2017**

FINE GRADE, SOD  
FIELD, STRIP TRACK

NO.	DESCRIPTION
1	SOFT OPEN LIFE TOTALS TO BE ASSIGNED
2	ALL BUILDING FOOTPRINTS TO BE ASSIGNED
3	ROOF = 1.00"
4	ROOFING = 2.00"
5	ROOFING = 2.00"
6	ROOFING = 2.00"
7	ROOFING = 2.00"
8	ROOFING = 2.00"
9	ROOFING = 2.00"
10	ROOFING = 2.00"

DATE: 03-17-17  
 PROJECT: PARRAMORE PS-8  
 SHEET: ARCHITECTURAL SITE PLAN



FOUNDATIONS
SLAB ON GRADE
TILT WALLS/ STEEL
ROOF/ WINDOWS
FRAMING/ MEP RI
POWER/ CHILLER/ AHU START UP
FINISHES
COMPLETE

1 ARCHITECTURAL SITE PLAN



NO.	DATE	DESCRIPTION

**HKS**  
 HKS INCORPORATED  
 10000 WESTHURST DRIVE  
 HOUSTON, TEXAS 77036  
 TEL: 281.444.4000  
 WWW.HKS.COM

**Baker Barrios**  
 ARCHITECTS  
 1100 N. 17TH STREET  
 HOUSTON, TEXAS 77002  
 TEL: 713.865.1234  
 WWW.BAKERBARRIOS.COM

PARRAMORE PS-8  
 PROJECT ADDRESS  
 GC'S PROJ. NO. 131-FSG-SW-5  
 ARCHITECTURAL SITE PLAN

ORANGE COUNTY PUBLIC SCHOOLS  
 DESIGN & CONSTRUCTION  
 FACILITIES SERVICES  
 1000 S. GALT WALK WAY, ORLANDO, FLORIDA 32809

**OC PS**

DATE: 03-17-17  
 SHEET NO.: A0.100  
 PROJECT: PARRAMORE PS-8  
 SHEET: ARCHITECTURAL SITE PLAN







# Orange County Public Schools

TASK	START	FINISH
Design Programming Phase	01/30/15	04/03/15
Concept/ Schematic Design	04/02/15	05/29/15
Design Development	05/29/15	7/31/15
Construction Documents	08/03/15	10/30/15
Construction	01/18/16	05/04/17







Thank you for the ½ penny Sales Tax.  
We appreciate our community.